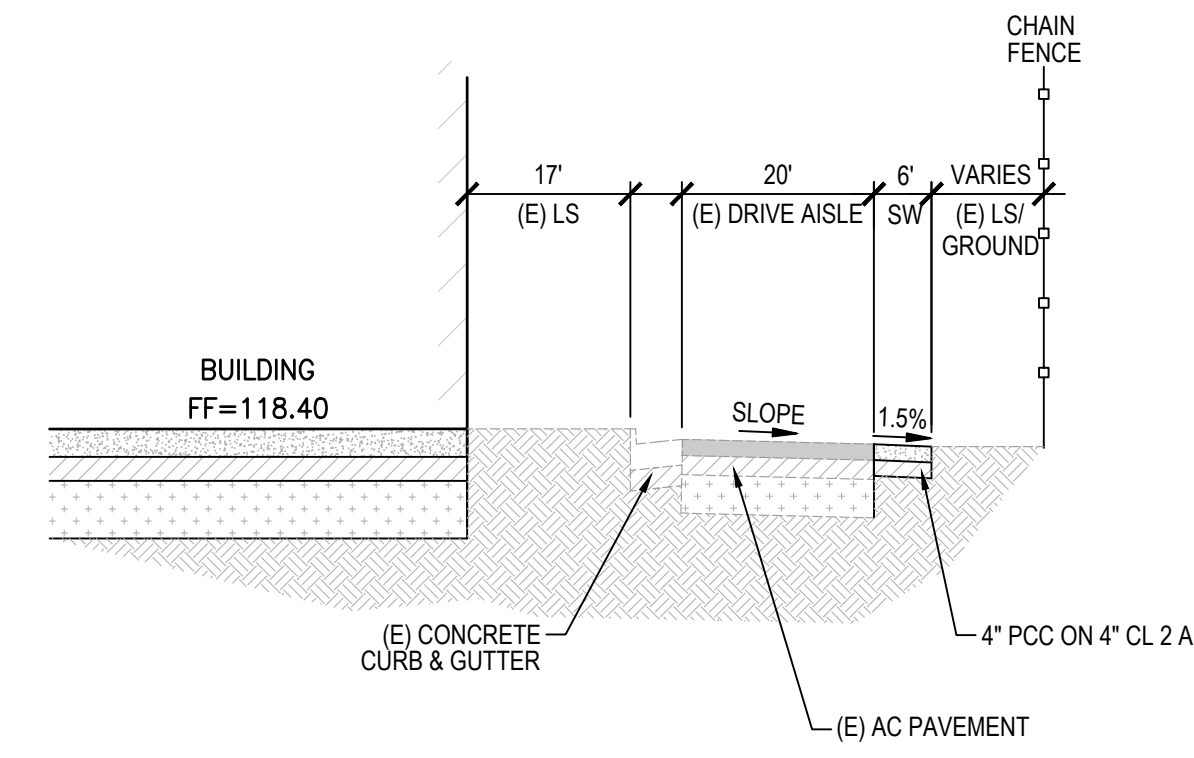


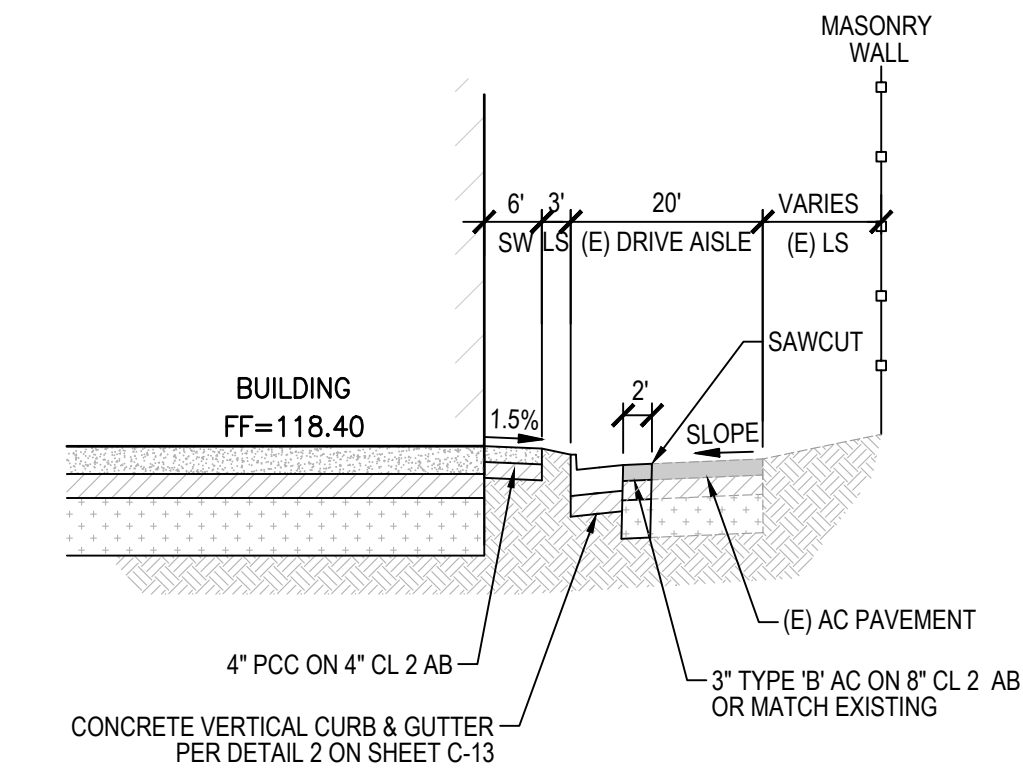
PC EXHIBIT I

PRELIMINARY NOT FOR CONSTRUCTION

RESERVED FOR STATE FIRE MARSHAL



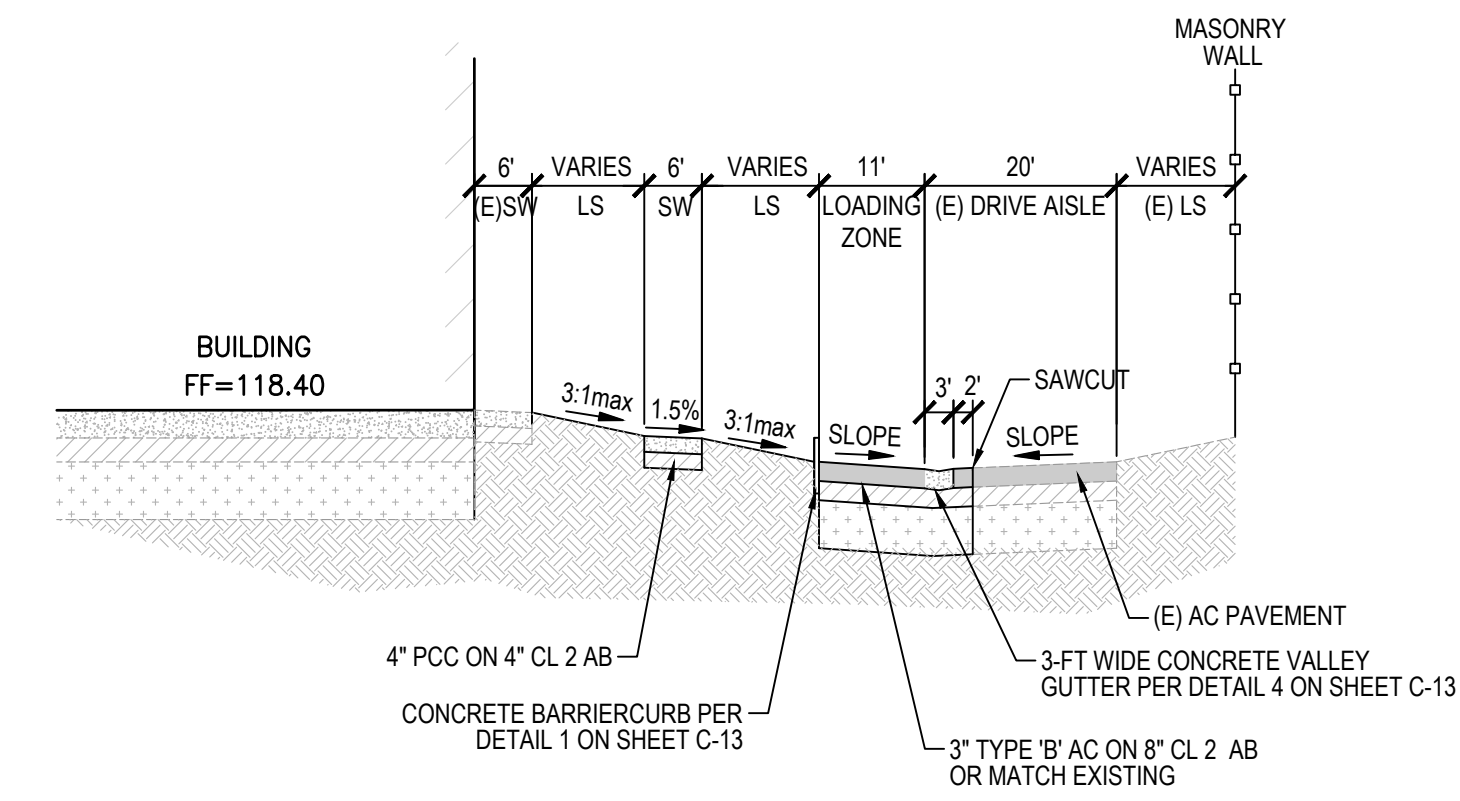
B SECTION
C-7



C SECTION
C-7

00012

00000



A SECTION
C-7



700 Alhambra Blvd.
Sacramento, California 95816
Main: (916) 234-3731
Fax: (502) 279-9110

© Copyright 2022

SB863
COUNTY OF PLACER
MENTAL HEALTH FACILITY
11851 GO FOR BROKE ROAD, ROSEVILLE, CA 95678
California State Fire Marshal Permit # 22-N-2744-CP-DR

NO.	REVISION	DATE

PROJECT NO.: 2022_042
DATE: 11-7-2022
DESIGNED BY: DVG
DRAWN BY: CEC
APPROVED BY: CDK

SHEET TITLE:
BUILDING B - MHF
CIVIL
Sheet Name

SECTIONS

SHEET NUMBER:
13 OF 21



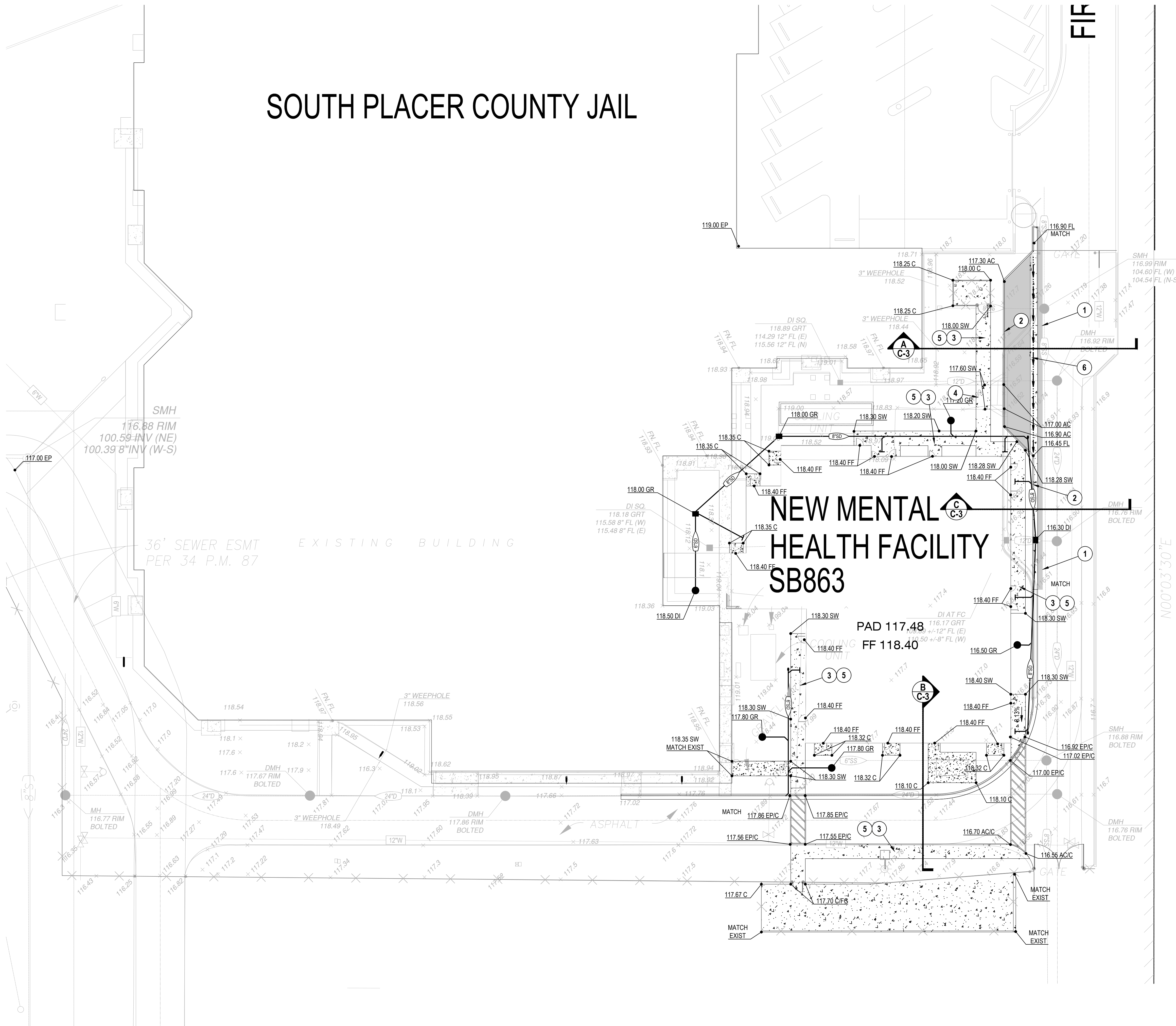
PRELIMINARY NOT FOR CONSTRUCTION

RESERVED FOR STATE FIRE MARSHAL

SOUTH PLACER COUNTY JAIL

CONSTRUCTION KEYNOTES:

- 1 SAWCUT LINE
- 2 CONSTRUCT CONCRETE CURB PER DETAIL 1 ON SHEET 20
- 3 CONSTRUCT CONCRETE SIDEWALK PER DETAIL 7 ON SHEET 20
- 4 DOWEL INTO EXISTING SIDEWALK
- 5 PLACE 4" PCC W/ #4 BARS @ 24" O.C.E.W OVER 4" AB ON COMPACTED SUBGRADE
- 6 CONSTRUCT 3-FT WIDE CONCRETE VALLEY GUTTER PER DETAIL 4 ON SHEET 20



700 Alhambra Blvd.
Sacramento, California 95816
Main: (916) 234-3731
Fax: (502) 279-9110
© Copyright 2022

SB863
COUNTY OF PLACER
MENTAL HEALTH FACILITY
11851 GO FOR BROKE ROAD, ROSEVILLE, CA 95678
California State Fire Marshal Permit # 22-N-2744-CP-DR

NO.	REVISION	DATE

PROJECT NO.: 2022_042
DATE: 11-7-2022
DESIGNED BY: DVG
DRAWN BY: CEC
APPROVED BY: CDK

SHEET TITLE:
BUILDING B - MHF
CIVIL
Sheet Name
GRADING AND DRAINAGE PLAN
SHEET NUMBER:

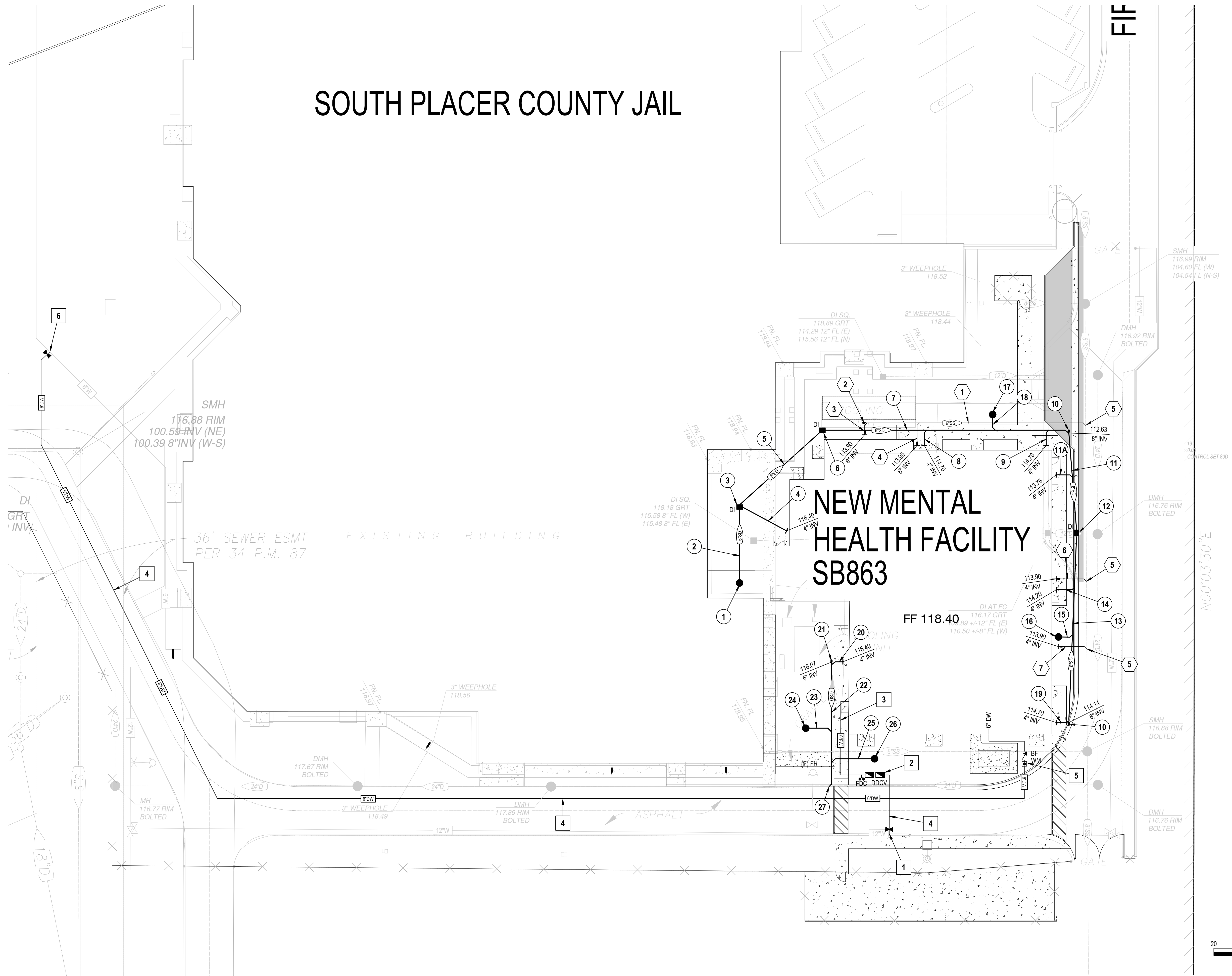


PRELIMINARY NOT FOR CONSTRUCTION

RESERVED FOR STATE FIRE MARSHAL

SOUTH PLACER COUNTY JAIL

NEW MENTAL HEALTH FACILITY SB863



CONSTRUCTION KEYNOTES

DRAINAGE

- 1 INSTALL 12" AREA DRAIN BY ADS OR APPROVED
GR = 118.00; INV = 116.00 6' OUT
- 2 PLACE 32 LF X 6" STORM DRAIN @ S = 0.0072
- 3 CONSTRUCT DROP INLET PER DETAIL 6 ON SHEET C-13;
GR = 118.00; INV = 115.93 4" IN; INV = 115.77 6" IN INV = 115.60 8" OUT
- 4 PLACE 22 LF X 4" STORM DRAIN @ S = 0.021
- 5 PLACE 45 LF X 8" STORM DRAIN @ S = 0.01
- 6 CONSTRUCT DROP INLET PER DETAIL 6 ON SHEET C-13;
GR = 118.00; INV = 115.15 8" THRU
- 7 PLACE 100 LF X 8" STORM DRAIN @ S = 0.025
- 8 PLACE 7 LF X 4" STORM DRAIN @ S = 0.083
- 9 PLACE 7 LF X 4" STORM DRAIN @ S = 0.215
- 10 INSTALL 6" CLEANOUT
- 11 PLACE 41 LF X 8" STORM DRAIN @ S = 0.03
- 11A PLACE 7 LF X 4" STORM DRAIN @ S=0.215
- 12 CONSTRUCT CURB INLET PER DETAIL 6 ON SHEET C-13; GR = 116.30;
INV = 111.80 8" IN (S); INV = 111.40 8" IN (N) (INV = 109.80 12" OUT) FIELD VERIFY
- 13 PLACE 78 LF X 8" STORM DRAIN @ S = 0.03
- 14 PLACE 8 LF X 4" STORM DRAIN @ S = 0.215
- 15 PLACE 5 LF X 4" STORM DRAIN @ S = 0.09
- 16 INSTALL 12" ADS AREA DRAIN GR = 16.50; INV = 13.50 4" OUT
- 17 INSTALL 12" ADS AREA DRAIN GR = 117.20; INV = 114.20 4" OUT
- 18 PLACE 8 LF X 4" STORM DRAIN @ S = 0.054
- 19 PLACE 5 LF X 4" STORM DRAIN @ S = 0.078
- 20 PLACE 5 LF X 4" STORM DRAIN @ S = 0.05
- 21 INSTALL 6" CLEANOUT
- 22 PLACE 50 LF X 6" STORM DRAIN @ S = 0.0548
- 23 PLACE 11 LF X 4" STORM DRAIN @ S = 0.10
- 24 INSTALL 12" AREA DRAIN BY ADS OR APPROVED
GR = 117.80; INV = 115.80 4" OUT
- 25 PLACE 17 LF X 4" STORM DRAIN @ S = 0.10
- 26 INSTALL 12" AREA DRAIN BY ADS OR APPROVED
GR = 117.80; INV = 115.57 4" OUT
- 27 CONNECT NEW 6" DRAINAGE LINE TO EXISTING 24" DRAIN LINE
(FIELD VERIFY EXISTING INVERT @ POINT OF CONNECTION)

SEWER:

- 1 PLACE 90 LF X 6" SEWERLINE @ S = 0.08
- 2 INSTALL 6" CLEANOUT
- 3 PLACE 6 LF X 6" SEWERLINE @ S = 0.125
- 4 PLACE 10 LF X 6" SEWERLINE @ S = 0.125
- 5 CONNECT NEW 6" SEWERLINE TO EXISTING 8" SEWERLINE
(FIELD VERIFY EXISTING INVERT AT POINT OF CONNECTION)
- 6 PLACE 12 LF X 6" SEWERLINE @ S = 0.125
- 7 PLACE 12 LF X 6" SEWERLINE @ S = 0.125

WATER:

- 1 CONNECT NEW 6" FIRE WATERLINE TO EXISTING 12" WATERLINE
- 2 INSTALL FIRE PROTECTION ASSEMBLY PER CITY STD DWG W-2
- 3 INSTALL 6" PVC C900 CL 200 FIRE WATERLINE
- 4 INSTALL 6" DOMESTIC WATERLINE
- 5 INSTALL APPROVED 6" WATER METER (DOMESTIC) AND BACKFLOW DEVICE
PER CITY STD DWG W-3 AND W-29
- 6 CONNECT NEW 4" DOMESTIC WATERLINE



700 Alhambra Blvd.
Sacramento, California 95816
Main: (916) 234-3731
Fax: (502) 279-9110

© Copyright 2022

SB863
COUNTY OF PLACER
MENTAL HEALTH FACILITY
11851 GO FOR BROKE ROAD, ROSEVILLE, CA 95678
California State Fire Marshal Permit # 22-N-2744-CP-DR

NO.	REVISION	DATE

PROJECT NO.: 2022_042
DATE: 11-7-2022
DESIGNED BY: DVG
DRAWN BY: CEC
APPROVED BY: CDK

SHEET TITLE:
BUILDING B - MHF
CIVIL
Sheet Name

UTILITY PLAN

SHEET NUMBER:
15 OF 21

